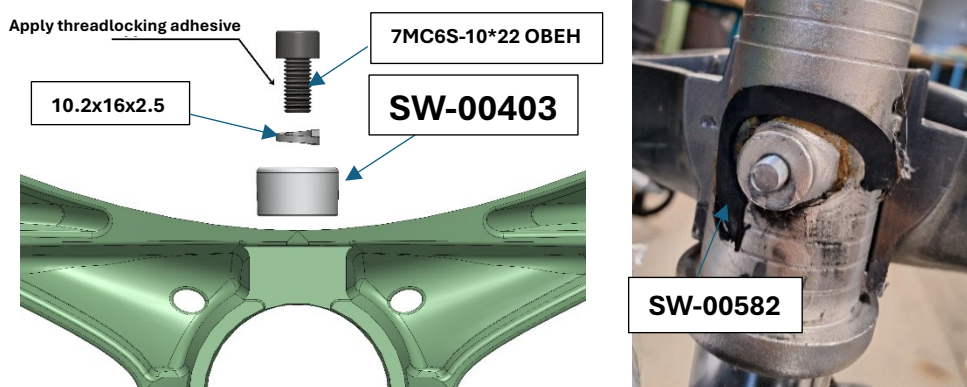


Leg half replacement instruction FSN 104121

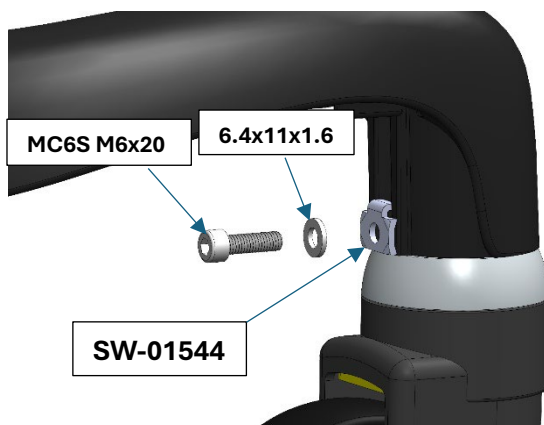
Disassemble the leg halves and remove old rubber washer SW-00582.

The following parts are not to be re-used: SW-00403, 7MC6S-10*22 OBEH, FBB 10.2x16x2.5

When assembling the leg halves, use 7MC6S-10*22 OBEH, FBB 10.2x16x2.5, Washer FORMA SW-00403, and Rubber Washer SW-00582 (the rubber washer is only on the front side) as shown in the figures below. Apply green threadlocking adhesive (LOXEAL 83-52) to the two 7MC6S-10*22 OBEHs. Tighten the screw to a torque of 79 Nm.



Use the following components for installation: MC6S M6x20, Washer 6.4x11x1.6, and SW-01544 (Check that all four tags attach to the leg half). Apply blue threadlocking adhesive (LOXEAL 55-02) to the screw and tighten to a torque of 5-7 Nm.



Leg half replacement FSN 104121 (revision 1)